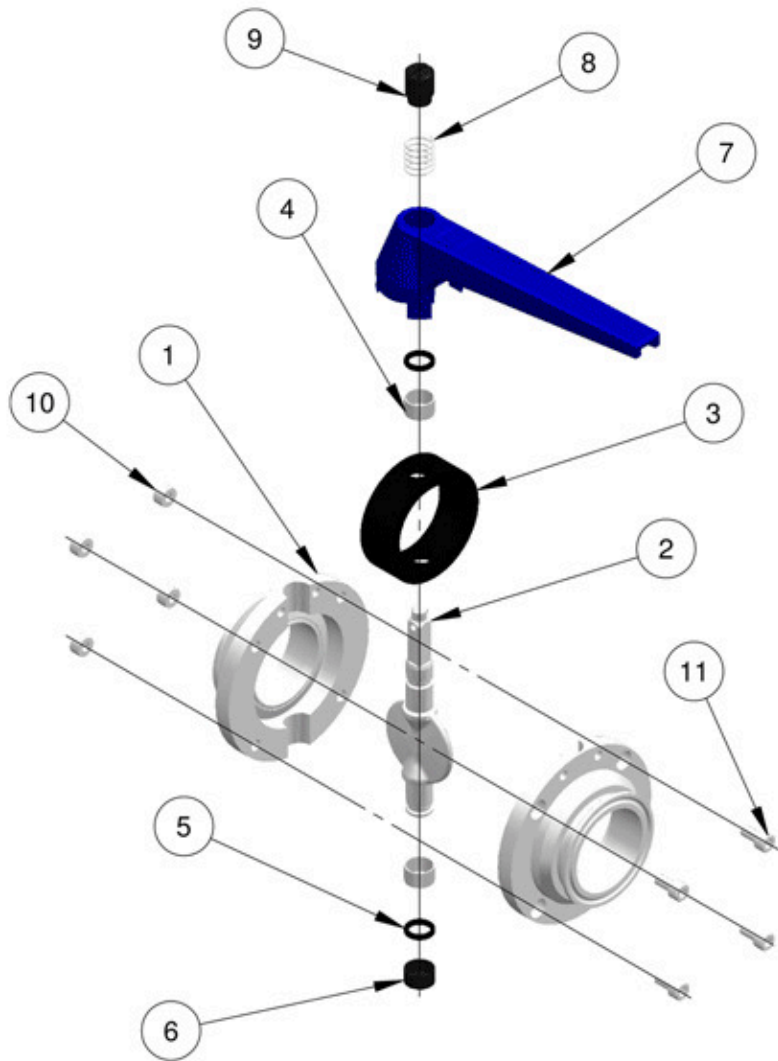




Your Diamond Butterfly Valve Exposed!



Component Breakdown

Item No.	Description	Material	Qty
1	Valve Half	316L St/St	2
2	Spindle	316L St/St	1
3	Seal	Elastomer	1
4	Bearing	Acetal	2
5	'O' Ring	Nitrile	2
6	Dust Cap	Nylon	1
7	Handle	Nylon	1
8	Spring	302 St/St	1
9	Thumb Nut	Acetal	1
10	Thread Insert	304 St/St	4
11	M6 Cap Head	304 St/St	4

Product Contact parts:

1. Valve Halves - forged, fully machined.
2. Spindle - Forged, fully machined and mirror polished.
3. Seal - Moulded - choice of FDA materials - EPDM, Silicon, Viton or Nitrile - all USP Class 6

Handle Options

7. We also offer a Multi-stop or Locking Handle in Stainless Steel

Please enquire for more details

Need a spares kit?

Item No.	Description	Qty
3	Seal	1
4	Bearing	2
5	'O' Ring	2
6	Dust Cap	1
10	Thread Insert	4
11	M6 Cap Head	4

*Please note that these items are not sold separately

Our fabulous value Spares Kit gives you all you need to keep your valve fit and healthy.

They're so easy to order too!
Here's an example of a 1" EPDM valve kit part code

Kit Code	Size	Seal type
KBFD	1.0	E

Just remember your seal material code:

- EPDM (E)
- Silicon (S)
- Viton (V)
- Nitrile (N)

Proud supporters of



Call today for more information 01799 58 2440

Call us: 01799 58 2440 email us: dairypipelines@dpluk.co.uk

Visit us at: www.dpluk.co.uk Unit 1 Dencora Park, Shire Hill, Saffron Walden. CB11 3GB