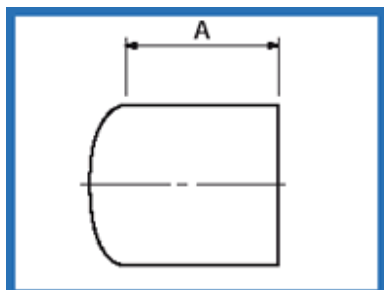


BIOBORE CAPS & BLANKS



a  stainless **technologies** company



Domed End Caps DT30 (DT4.1.5-1) ✓ ASME BPE

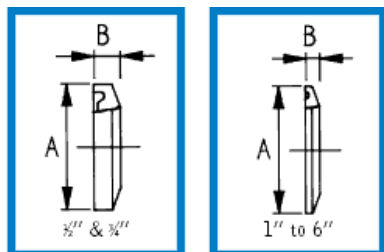
SIZE	PART #	A (mm)
0.5	DEC05STDT30	38.1
0.75	DEC07STDT30	38.1
1.0	DEC10STDT30	38.1
1.5	DEC15STDT30	38.1
2.0	DEC20STDT30	38.1
2.5	DEC25STDT30	38.1
3.0	DEC30STDT30	44.5
4.0	DEC40STDT30	50.8
6.0	DEC60STDT30	63.5

Stainless Fittings. Tipton Road, Dudley, West Midlands DY1 4SQ
Tel: +44 (0)121 557 1188
E-mail: stainlessfittings@sfluk.co.uk www.sfluk.co.uk

BIOBORE CAPS & BLANKS



a  stainless **technologies** company



Solid End Caps (Blanks) DT31 (DT-4.1.5-2) ✓ ASME BPE

SIZE	PART #	A mm	B mm
0.5/0.75	BC07STDT31	25.0	4.7
1.0/1.5	BC15STDT31	50.4	6.4
2.0	BC20STDT31	63.9	6.4
2.5	BC25STDT31	77.4	6.4
3.0	BC30STDT31	90.9	6.4
4.0	BC40STDT31	118.9	7.9
6.0	BC60STDT31	166.9	11.1

Stainless Fittings. Tipton Road, Dudley, West Midlands DY1 4SQ

Tel: +44 (0)121 557 1188

E-mail: stainlessfittings@sfluk.co.uk www.sfluk.co.uk

